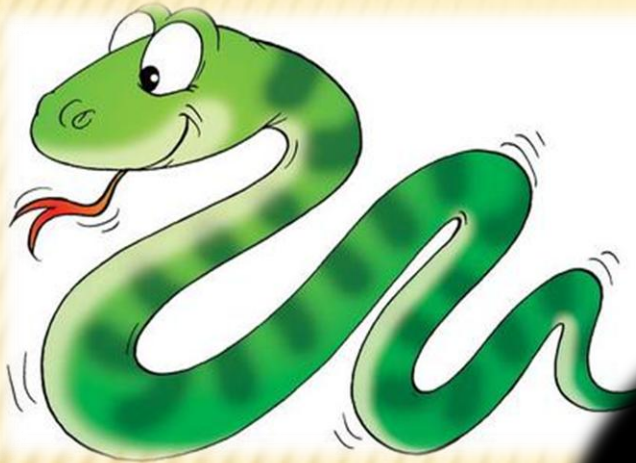
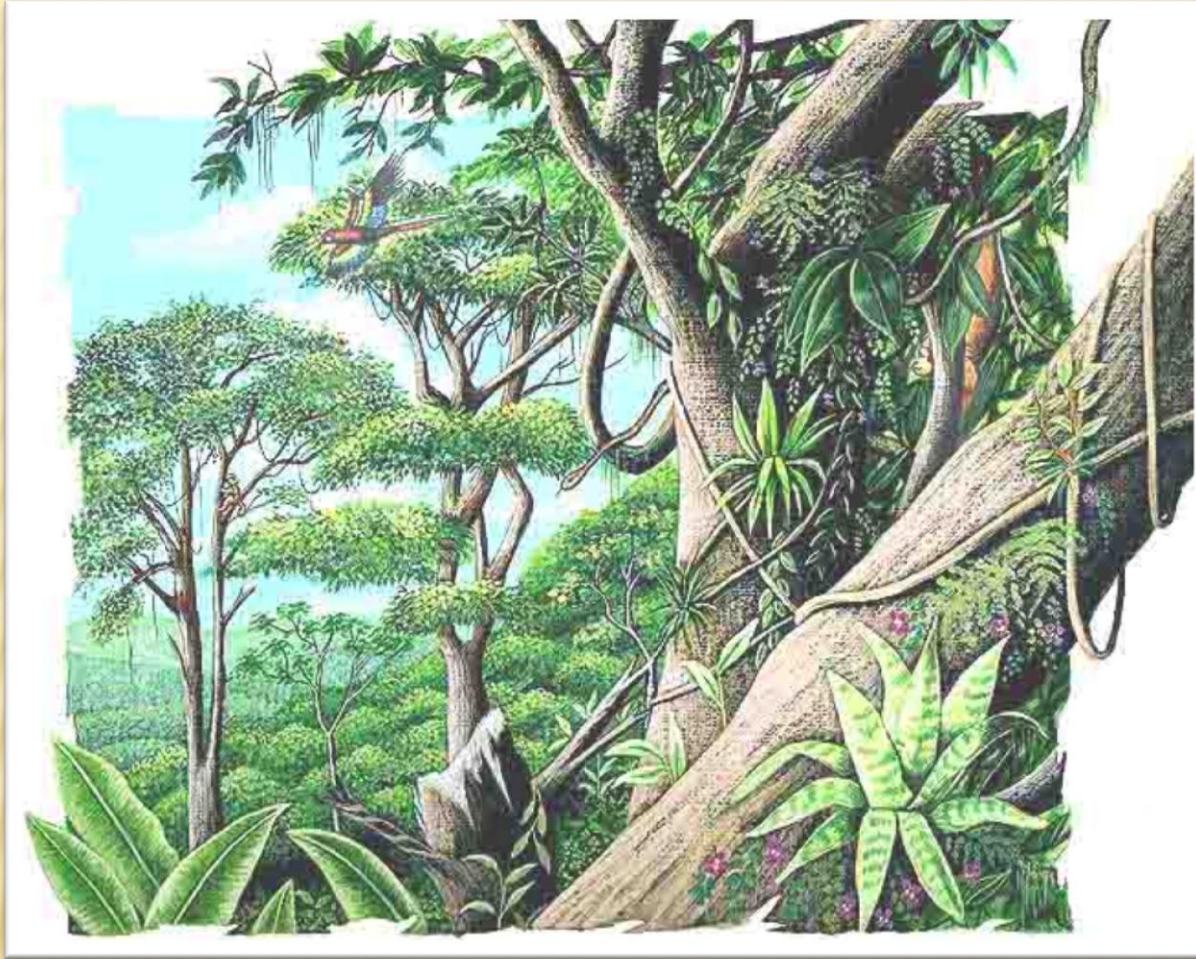


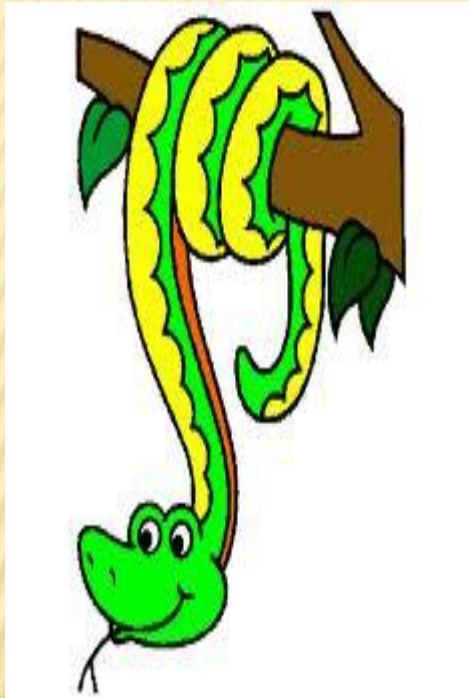
THE JUNGLE STORY



Come on! let's go walking through the vegetation of the jungle.



THERE IS PLENTY OF IT! OH, LOOK AT THIS BIG TREE! IT SEEMS THAT A BRANCH IS MOVING.



WHAT ANIMAL IS IT?

IT'S A BIG GREEN SNAKE!

Carry on with our expedition. Oh, there is a big river we will have to go through it.



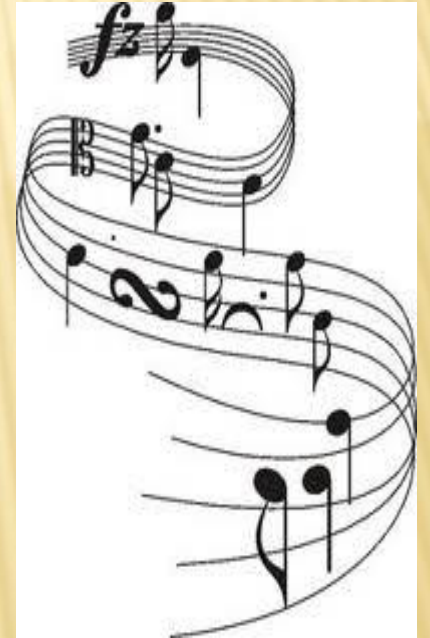
BUT...WAIT A MOMENT! IT SEEMS THAT A BIG STONE IS MOVING IN THE RIVER.



WHAT ANIMAL IS IT?

IT'S A BIG AND DANGEROUS CROCODILE!

Let's search another way. Shut up please!



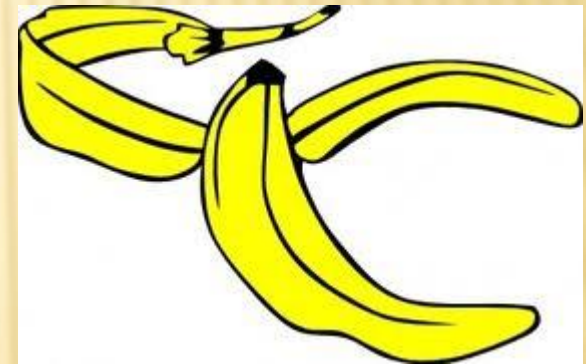
**CAN YOU LISTEN THIS SOUND?LOOK AT
THE SKY, IT'S AN ANIMAL.**



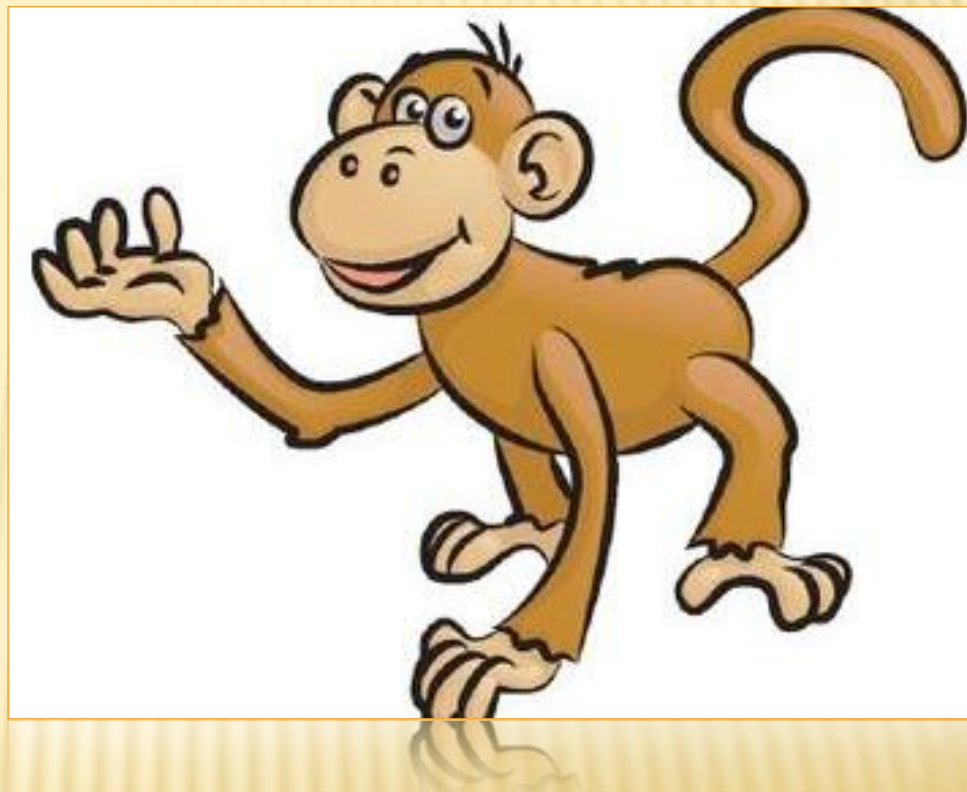
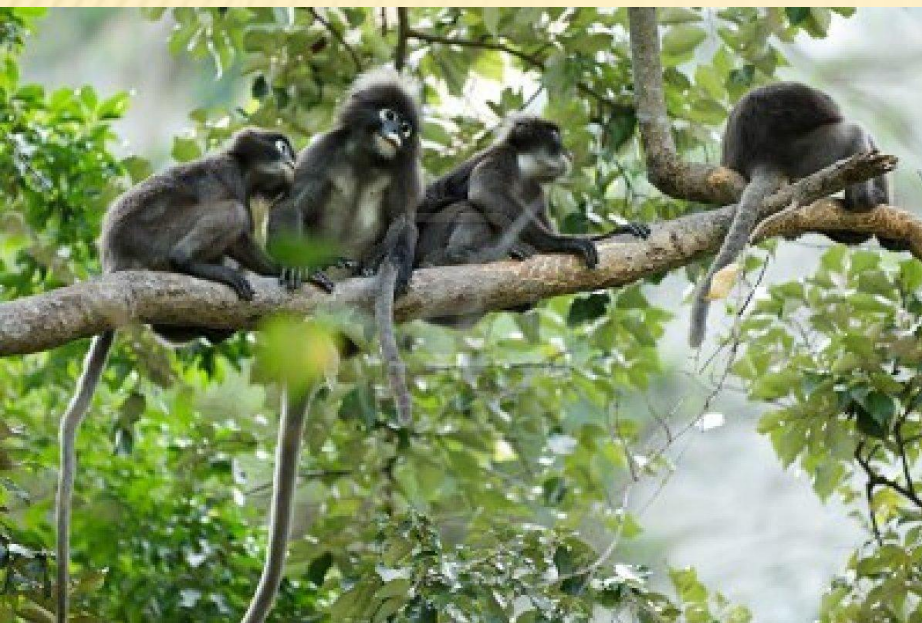
WHAT ANIMAL IS IT?

IT'S A COLOURFUL TOUCAN!

Let's continue walking through the jungle.



**OH, LOOK AT THE GROUND! THERE ARE
BANANA PEELS**



WHAT ANIMAL EATS LOTS OF BANANAS?

LOOK AT THE TREE! IT'S A MONKEY!

Come on! there is plenty of vegetation and the jungle is very dark.



**WE CAN'T SEE ANYTHING! OH, WHAT'S
THAT! THERE ARE TWO BIG EYES!**



OH, NO! IT'S A TIGER! RUN FAST! WE HAVE TO
RETURN HOME.